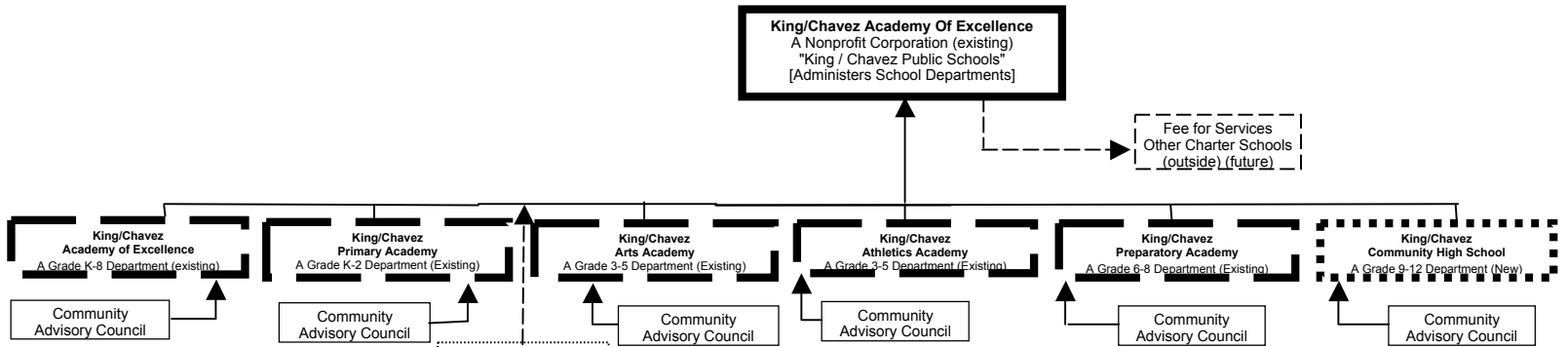


King/Chavez Public Schools Corporate Structure

11/23/07



Key:

Existing Corporation

The Corporate Parent (King/Chavez Academy of Excellence):
 Is employer of all faculty and staff
 Hires and values CEO,
 Shares cost of CEO and administration with schools (departments)
 Out-sources other administrative needs (e.g., CSMC/Sandro Lanni)
 Holds title to real estate and debt
 Constitutes only corporate board and fiscal agent
 Approves larger policies and monitors performance of all departments
 Coordinates fund raising
 Operates with potential to assist or operate other charters
 CEO hires and manages all staff unless delegated by him

Possible Enterprises

Not essential to immediate needs; prepared for future opportunities.

Community Advisory Council

Advisory only; recommendations not binding on school or corporation

Existing Department

Existing K-8 Program at 735 Cesar E. Chavez Parkway
 Formerly King Elementary at 415 31st Street; three new schools opened September 2005
 Each school (department) has its own charter, test scores and advisory council.
 Existing 6-8 Program at 415 31st Street Opened August 2006

New Departments

King Chavez Community High School will begin with 9th Grade and add a grade each year
 King Chavez Sierra Vista Academy will begin with a K-5 and a grade each year